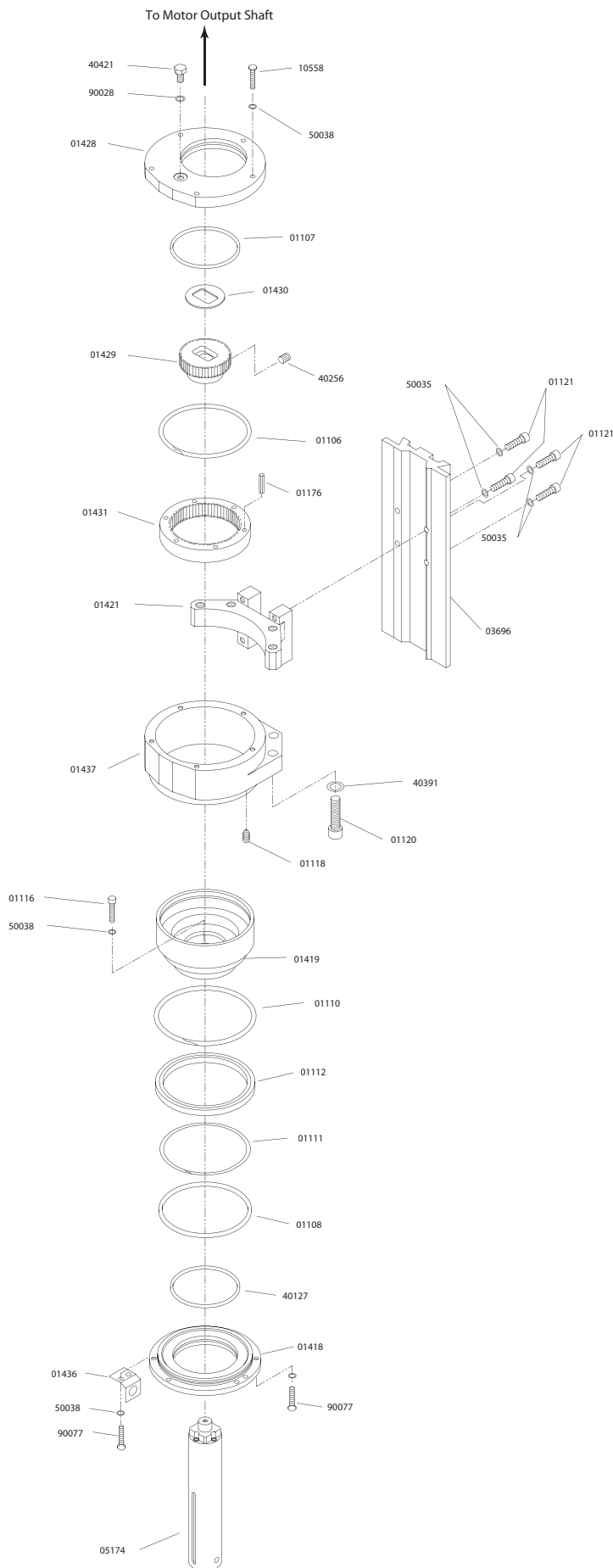




## Parts List -- Model 10923TS

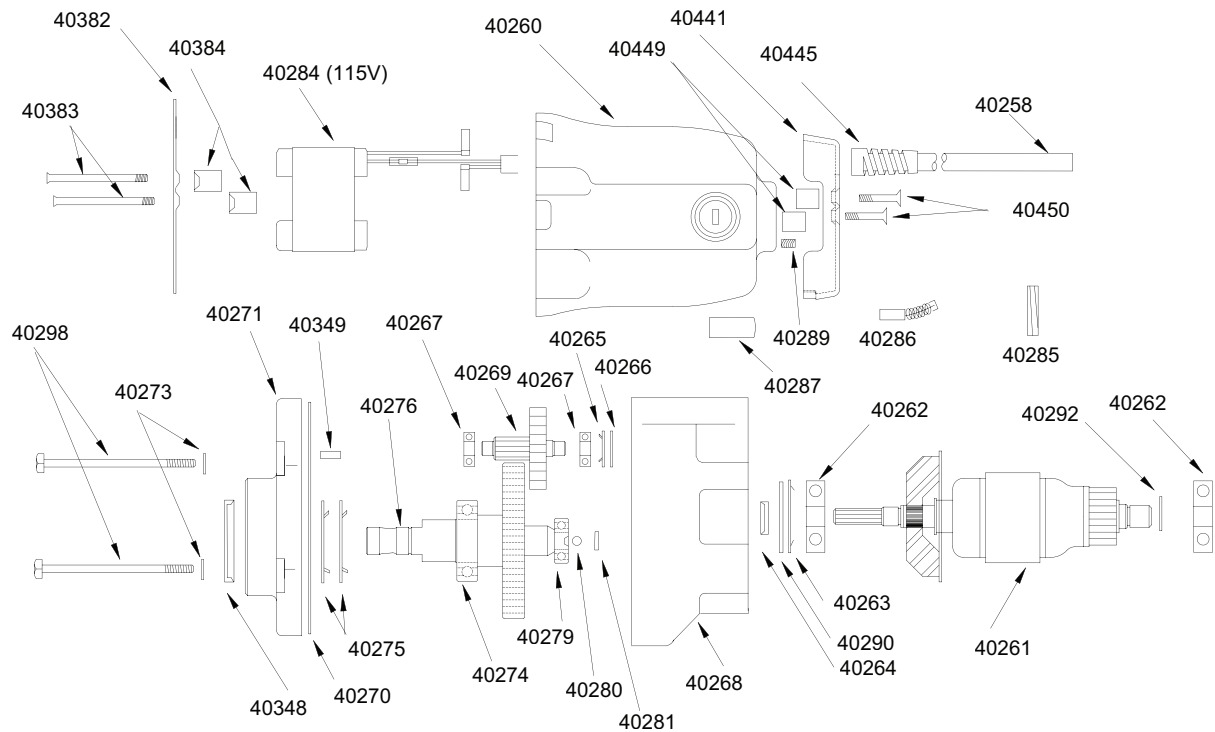
Part #	Description	Qty	Part #	Description	Qty
01318A	Housing	1	10623	Set Screw 1/4-28 x 3/8	2
01320	Warning Tag	2	10624	Screw SHC 1/4-20 x 3/4	6
01326	Screw - SHC 1/4-28 x 1/2	1	10649	Screw #10-32 x 3/4	3
01836	Round Locating Pin	2	10660	Screw 1/4-20 x 5/8	1
01837	Diamond Locating Pin	2	10661	Screw #10-24 x 3/8	3
02110	Front Support Bracket	1	10662	Lock Nut - #10-24	2
02368	Screw - SHC 3/8-16 x 1	5	10956	Brass Gib (Pair)	1
02639	Pin-Dowel 3/8 x 1	4	10977	Screw BHC 1/4-20 x 1/4	1
03288	Gripper	2	40104	Drive Screw #2	8
03500	Machine Washer	2	40107	Hel. Lock Washer - 5/16	1
03501	Hitch Pin	2	40110	Hel. Lock Washer - 1/2	4
03502	Retaining Ring	6	40225	Steel Gib	1
03512	Clamp Carrying Arm	1	40229	Feed Gear	1
03513	Clamp Arm	2	40230	Rack Gear	1
03514	Clamp Bracket	1	40231	Bronze Bushing	2
03515	Base Plate	2	40232	Roller Bearing	1
03517	Clamp Round Bushing	1	40234	Thrust Washer	2
03518	Clamp Flat Bushing	1	40237	Set Screw - 1/4-28 x 1/2	5
03519	Clamp Middle Pin	1	40254	Feed Hub Assembly	1
03522	Clamp Turn Handle	1	40297	Screw #6-32 x 1/2	4
03524	Clamp Short Pin	2	40300	O-Ring	2
03525	Clamp Lower Pin	1	40301	Thrust Washer	2
03526	Clamp Carrying Handle	1	40302	Retaining Ring	2
03528	Radiused Clamp Pad	2	40309	Cord Clamp	1
03563	Hex Nut 5/16-18	1	40373	Strain Relief	1
03564	Bolt 1/2-13 x 1	2	40390	Bolt 1/4-20 x 1	3
03575	Clamp Feed Screw Assy	1	40391	Helical Lock Washer	7
03662	Template Locator Assy	1	40398	Retaining Ring	1
03690	Bolt 1/2-20 x 3	2	40441	Motor End Cap	1
03696	Motor Slide	1	40449	Motor End Cap Spacer	2
04457	Nut Hex 1/4-28	1	40450	Screw #10-32 x 7/8	2
04532	Feed Knob	3			
05174	Arbor Assy	1			
10560	External Tooth Lock Washer	2			
10568	Flat Washer - 1/2 ID	2			
10569	Feed Handle	3			

# Gear Reduction View & Parts



Part #	Description	Qty
01106	Retaining Ring	1
01107	O-Ring	1
01108	O-Ring	1
01110	Retaining Ring	1
01111	Retaining Ring	1
01112	Ball Bearing	1
01116	Screw SHC #10-32 x 1	4
01118	Set Screw 5/16-18 x 5/8	2
01120	Screw SHC 3/8-24 x 1	4
01121	Screw SHC 1/4-28 x 1	4
01176	Roll Pin	6
01418	Lower End Cap	1
01419	Bearing Housing	1
01421	Upper Support Bracket	1
01428	Top End Cap	1
01429	Altered Spur Gear	1
01430	Shim	1
01431	Internal Gear	1
01436	Inducer Strap	1
01437	Internal Gear Bearing Block	1
03696	Motor Slide	1
05174	Arbor Assy for Twister Bits	1
10558	Screw BHC #10-32 x 1	5
40127	O-Ring	1
40256	Set Screw 5/16-18 x 3/8	1
40391	Helical Lock Washer - 3/8	7
40421	Bolt 1/4-28 x 1/2	1
50035	Internal Tooth Washer	4
50038	Helical Lock Washer	15
90028	Lock Washer	1
90077	Screw BHC #10-32 x 1/2	6

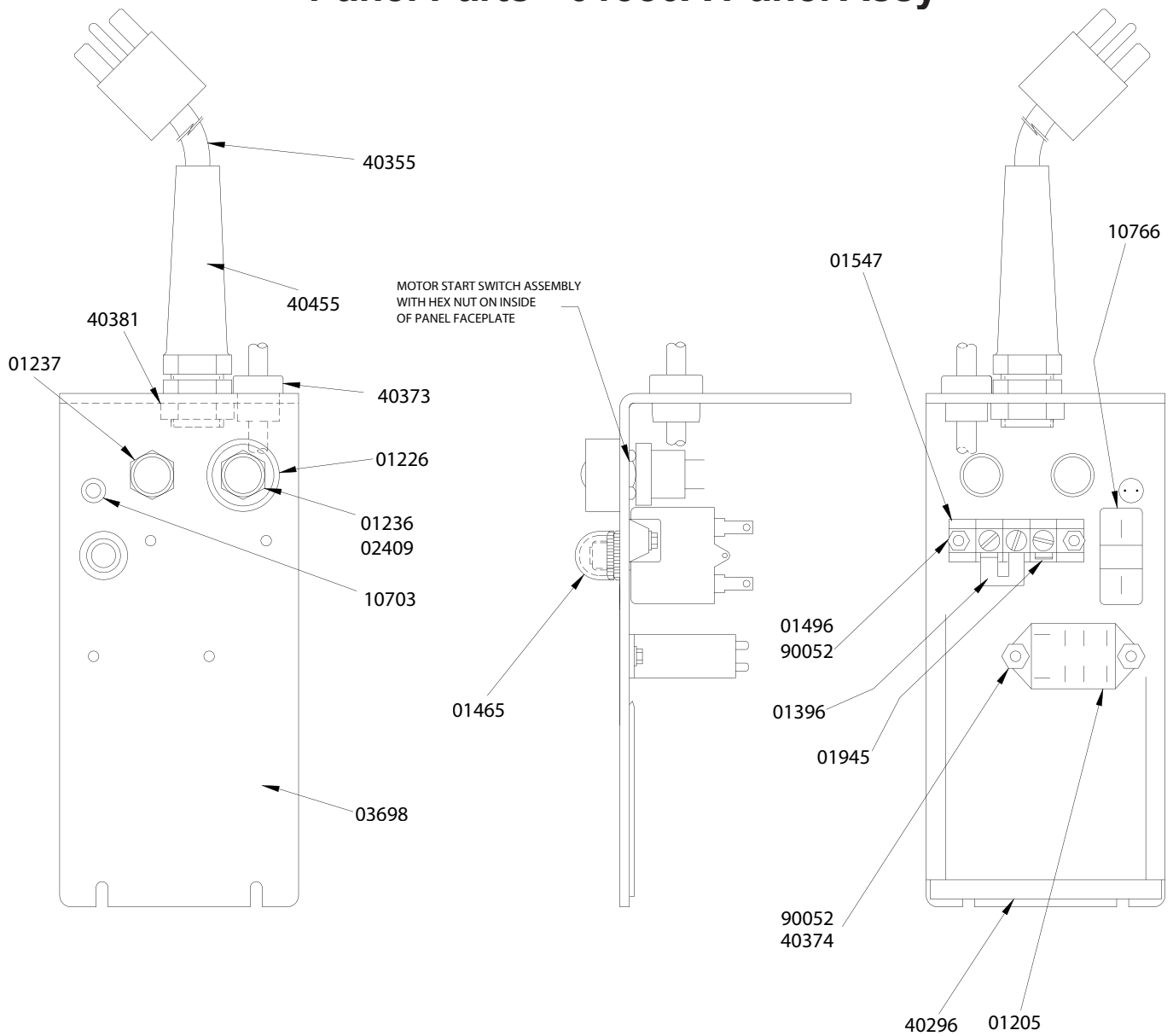
# Motor View & Parts List



Part #	Description	Qty	Part #	Description	Qty
40258	Motor Cord	1	40281	Motor Slug	1
40260	Housing, Brush End	1	40284	Field Assy 115V	1
40261	Armature Assy 115V	1	40285	Brush Plug	2
40262	Bearing	2	40286	Brush (Package of 2)	1
40263	Flat Spring	1	40287	Brush Holder	2
40264	Seal	1	40289	Screw #10-32 x 1/4"	2
40265	Flat Spring	1	40290	Washer	1
40266	Washer	1	40292	Retaining Ring	1
40267	Bearing	2	40298	Screw 1/4-20 x 3-1/2"	4
40268	Gear Housing	1	40348	Seal	1
40269	Gear Cluster	1	40349	Plug	1
40270	Gasket	1	40350	Syntech grease	8 oz.
40271	Cap. Gear Housing	1	40382	Baffle	1
40273	Lock Washer 1/4"	4	40383	Screw #10-32	2
40274	Bearing	1	40384	Baffle Spacer	2
40275	Flat Spring	2	40441	End Cap	1
40276	Gear Output	1	40445	Strain Relief	1
40279	Bearing	1	40449	Spacer	2
40280	Ball	1	40450	Screw #10-32 x 1"	2
			90424	Brush Holer Clip	2



# Panel Parts - 01380A Panel Assy



Part #	Description	Qty	Part #	Description	Qty
01205	Relay	1	02361	Relay	1
01226	Switch Guard	1	02409	Seal - Green	1
01228	Seal - Red	1	10703	Pilot Light	1
01236	Switch	1	10766	Circuit Breaker	1
01237	Switch	1	40296	Seal	2
01396	Jumper	1	40373	Strain Relief	1
01465	Seal for Switch	1	40374	Hex Nut	2
01496	Spacer	2	40381	Hex Nut	1
01547	Terminal Strip	1	40455	Fitting- Strain Relief	1
01945	Spade Terminal	1	90052	Lock Washer	4